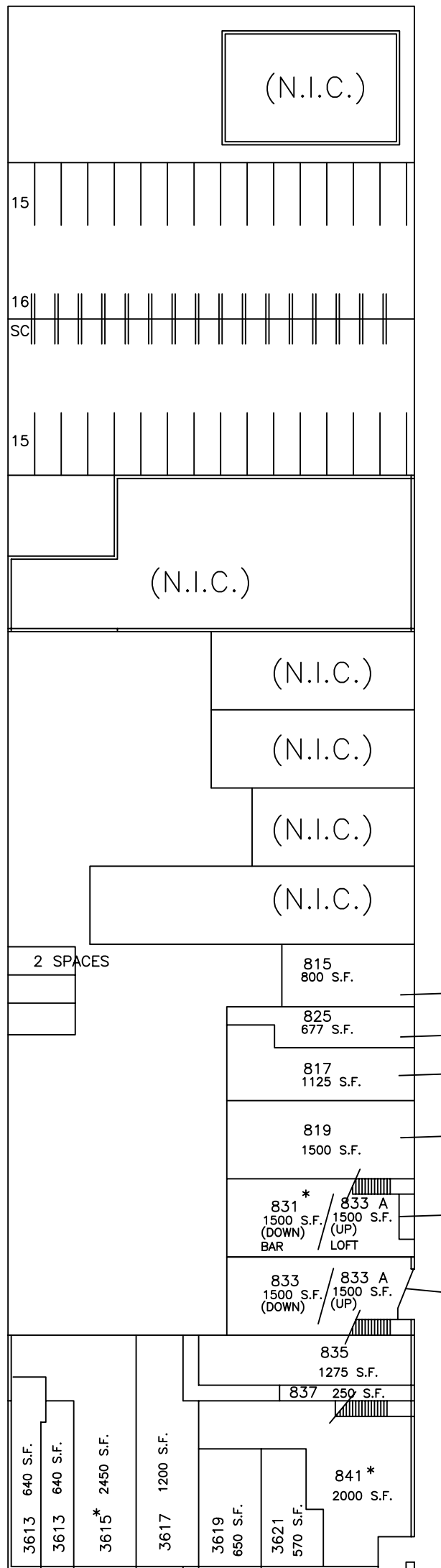


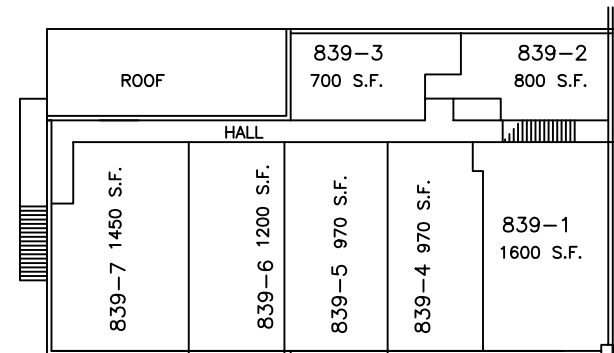
TWO STORY
MASONRY
BUILDING

GROUND FLOOR
(8) "GRANDFATHERED" PERSONAL SERVICES USE- 0 PARKING REQUIRED
MERIDIAN BAR - 2 SPACES REQUIRED (25 "GRANDFATHERED" SPACES)
PROPOSED EVENTS SPACE- 29 SPACES REQUIRED



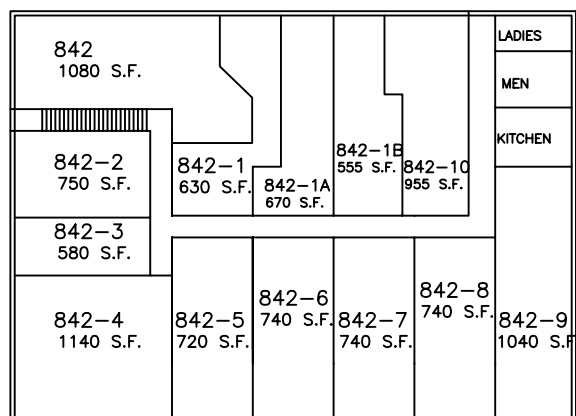
PARRY AVE. GROUND FLOOR

(9) "GRANDFATHERED" PERSONAL SERVICES USE- 0 PARKING REQUIRED



SECOND FLOOR

(7) "GRANDFATHERED" PERSONAL SERVICES USE- 0 PARKING REQUIRED



SECOND FLOOR

13 UNITS
13 PARKING SPACES

EXPOSITION PARK

TOTAL PARKING REQUIRED = 31 SPACES
TOTAL PARKING PROVIDED = 104 SPACES